



Imperial College
London

IGHI education prospectus

Our online postgraduate
programmes

**INSTITUTE OF
GLOBAL HEALTH
INNOVATION**



Contents

1 A message from our Programme Board

2 Our online and hybrid postgraduate programmes

3 Meet the directors

4 MSc Health Policy

- 4 MSc Health Policy: Course overview
- 5 Module description
- 7 Student stories
- 8 Meet our Programme Director, Colin Bicknell
- 9 Study qualification
- 9 Future opportunities

10 MSc Patient Safety

- 10 MSc Patient Safety: Course overview
- 11 Module description
- 13 Student and staff stories
- 14 Study qualification
- 15 Future opportunities

16 MSc Healthcare and Design

- 16 MSc Healthcare and Design: Course overview
- 17 Module description
- 18 Future opportunities
- 19 Student stories

20 Accelerating your career

21 FAQs



“Our doors are open to people who want to help bring transformational improvements in healthcare. Our programmes have been designed with flexible, stimulating and innovative teaching approaches, delivered by leading experts in the field, to give you the best learning and networking experience possible. Studying with us will help you develop the knowledge, skills, and connections to excel in your career.”



- Prof The Lord Ara Darzi,
Director, Institute of Global Health Innovation

A message from our Programme Board

Imperial College London is a world-class university with a focus on scientific subjects, which makes it truly unique. Imperial's degrees are highly valued by employers across the world due to its academic excellence and our consistent ranking among the top 10 universities in the world. Studying with us, you can benefit from the world-leading teaching and research within Imperial's community and professional development for career success.

The Institute of Global Health Innovation (IGHI) is a multidisciplinary team of pioneering people who break traditional research silos to tackle some of the greatest global health challenges facing the world today. At IGHI, we offer a flexible postgraduate study experience, with a wide choice of programmes featuring different healthcare topics. Our programmes are world-leading, with the aim of developing future leaders and change-makers in healthcare. Our alumni have led national initiatives in the COVID response, managed regional programmes to transform health

policy and practices, and used evidence-based design to manufacture and prototype innovative solutions to healthcare challenges.

Many of our courses are suitable for professionals working in healthcare or allied with healthcare systems, but our students come from a wide variety of backgrounds which brings fantastic opportunities to learn from one another's diverse experiences and perspectives. We are looking for people who are passionate about healthcare and wish to contribute to better healthcare systems in the future.

Here you will find more details about our programmes, what to expect and the opportunities they will bring. We hope to soon welcome you as part of our growing community of healthcare innovators. We look forward to helping you make a difference, not only for your own future direction in healthcare but also for the lives of patients, professionals and health systems alike.



Programme Board

Prof The Lord Ara Darzi (Director, Institute of Global Health Innovation)

Mr Colin Bicknell (Programme Director, MSc Health Policy)

Mr Erik Mayer (Programme Director, MSc Health Policy)

Prof Brendan Delaney (Programme Director, MSc Patient Safety)

Dr Ana Luisa Neves (Deputy Director, MSc Patient Safety)

Mr Daniel Leff (Programme Director, MSc Healthcare and Design)

Mr James Kinross (Programme Deputy Director, MSc Healthcare and Design)

Our online and hybrid postgraduate programmes

The Institute of Global Health Innovation is one of Imperial College London's Global Challenge Institutes. We're working towards a future where healthcare is better, safer and more equitable across the globe. To help us realise our vision, we deliver several world-class educational programmes that are nurturing the next generation of leaders in healthcare.

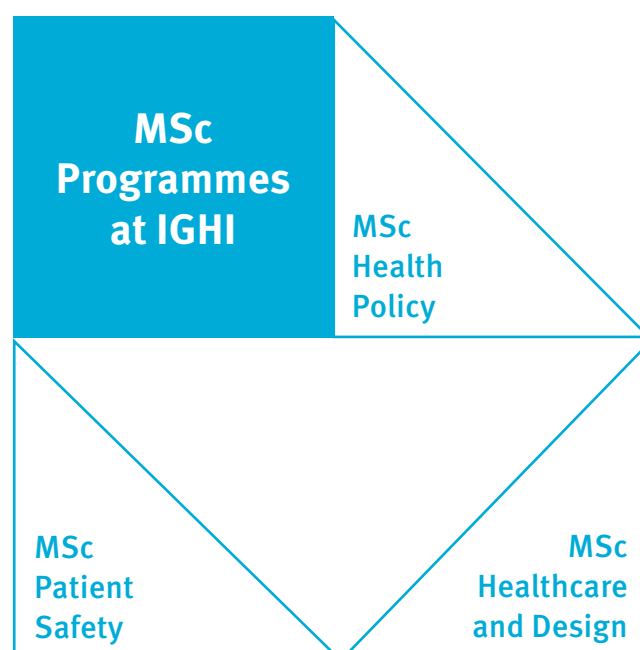
Through a blend of teaching from globally renowned experts in the field, engagement with novel research and the opportunity to translate your learnings into practice, we aim to equip you with the skills and knowledge to advance in a range of career directions within the healthcare realm. Our programmes will engage you with the most critical, challenging, and innovative topics in the healthcare industry: health policy, patient safety and design in healthcare, all of which are fundamental for achieving safer, efficient and more effective healthcare systems.

The MSc Health Policy and MSc Patient Safety programmes are delivered with a focus on globally relevant practice, with an aspiration to improve the quality of health policy both within the UK and internationally, considering the implications of patient safety under the global crises and the delivery of innovation in low-resource settings. The MSc Healthcare and Design programme provides you with a greater understanding of the UK health system and the systemic challenges it faces to remain sustainable.

Studying with us, you'll benefit from our flexible teaching and learning approaches that enable you to balance your studies and work. Having undergone

recent digitisation and refreshment, our courses employ a range of engaging online learning methods, comprising innovative group-working exercises combined with live teaching sessions with world-leading academics. Our MSc in Patient Safety is fully online, while our Health Policy and Design in Healthcare programmes couple virtual learning with some face-to-face activities.

To find out more about what learning with us looks like, continue reading for information on how our programmes are structured, the practical skills and knowledge you'll take away, and the doors our courses will open for you.



Meet the directors



Professor Brendan Delaney
Chair in Medical Informatics and Decision Making
brendan.delaney@imperial.ac.uk

Professor Brendan Delaney is the Programme Director of the MSc Patient Safety. Prior to moving to Imperial, he was Wolfson Professor of General Practice at King's College London. At Imperial, he works in the Institute of Global Health Innovation, with research in artificial intelligence, cancer diagnosis and learning systems, eSource for clinical trials and global eHealth. He sits on the Cancer Research UK Population research funding panel and the Medical Research Council Methodology Research panel.

Dr Ana Luisa Neves

Advanced Research Fellow and Associate Director, Patient Safety Translational Research Centre
ana.luisa.neves14@imperial.ac.uk



Dr Ana Luisa Neves is the Deputy Director of the MSc Patient Safety and Module Lead (Digital Health) for the Master of Public Health at Imperial. Ana is also Module Lead (Health Data Collection and Principles of Health Data Science) at the PhD Programme in Health Data Science at the University of Porto, where she holds a post as Associate Professor. She has more than 10 years of research experience, with a focus on the use of health data and digital technologies to deliver safer, more effective, and patient-centred care.



Mr Erik Mayer
Clinical Reader in Urology
e.mayer@imperial.ac.uk

Mr Erik Mayer is the Programme Director of the MSc Health Policy and a research Theme Lead (Partnering with Patients for Safer Care) at IGHI's NIHR Imperial Patient Safety Translational Research Centre. He is a Clinical Reader in Imperial's Department of Surgery and Cancer and the Institute of Global Health Innovation and an Honorary Consultant Surgeon at Imperial College Healthcare and the Royal Marsden NHS Trusts.

Mr Colin D Bicknell

Clinical Reader in Vascular Surgery
colin.bicknell@imperial.ac.uk



Mr Colin Bicknell is the Programme Director of the MSc Health Policy and has overseen the graduation of over 250 students. He is a Clinical Reader in the Department of Surgery and Cancer, Imperial College London. He is a Consultant Vascular Surgeon and Head of Specialty at the Imperial Vascular Unit, London, and a Fellow of the Royal College of Surgeons of England.



Mr Daniel Richard Leff
Reader in Breast Surgery
d.leff@imperial.ac.uk

Mr. Daniel Leff is the Course Director of the MSc Healthcare and Design. He is also currently

a Reader in Breast Surgery working in the Departments of BioSurgery and Surgical Technology and IGHI's Hamlyn Centre for Robotic Surgery. Daniel received his PhD in Surgery from Imperial College London in 2009, working under the supervision of IGHI co-director Professor the Lord Ara Darzi.

MSc Health Policy: Course overview

The MSc Health Policy aims to equip professionals from across the health and social care sector with the skills to improve the quality of health policy design and delivery. Learning with leading internationally renowned academics and practitioners, you will explore fundamental aspects of health policy, from evidence to formation and implementation, and how health policy interacts with society.

Through a blend of online and face-to-face teaching, coupled with personal study, you will acquire a detailed theoretical and practical understanding of health policy. We teach aspects of policy design to include health systems, economics,

behavioural insights, public health, innovation, measuring and improving quality, communicating health policy and leadership. We will introduce you to both quantitative and qualitative research techniques that will enable you to carry out original studies. You will also develop the skills and expertise to critique existing and emerging health policies using evidence-based approaches.

Throughout the programme, you will consider the challenges affecting different regions and countries and use comparative analysis to determine potential alternative responses to them.

Module description

Module 1: Health Systems and Policy

This module helps you to understand the building blocks of the health system, such as financing systems, human resources, information policy, service delivery, and leadership and governance. It shows how an understanding of these domains, and their interrelatedness, should inform the design of effective policies, and ensure that resources are used wisely.

Module 2: Health Economics for Health Policy

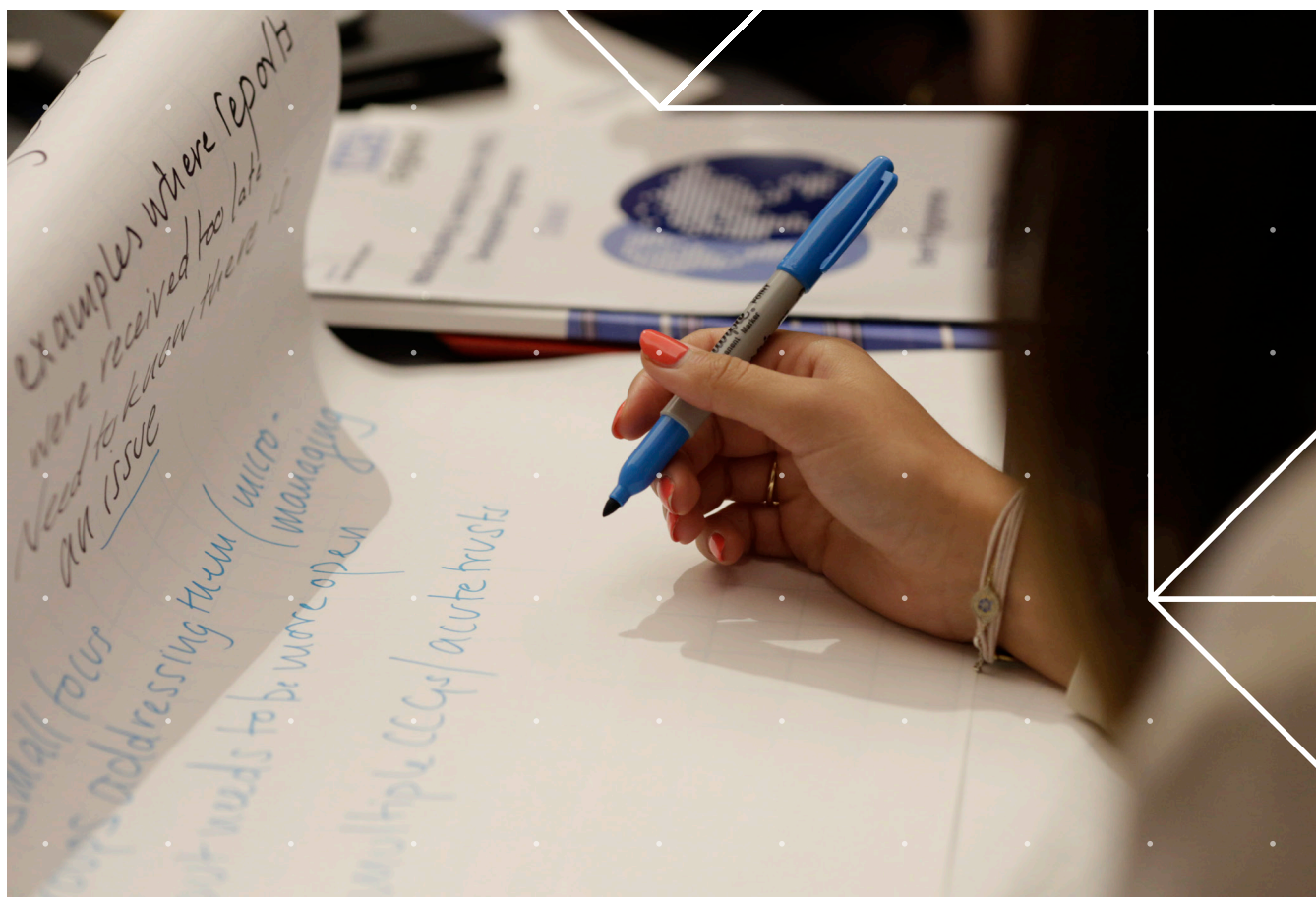
This module provides you with an overview of health economics principles, exploring microeconomics and how they apply to health policy. Within this module, you will undertake economic evaluations of health care programmes and policies, employing structured approaches, drawing on contemporary theory and current best practice.

Module 3: Financing Healthcare

This module adopts an interdisciplinary approach to introduce the principles and methods used to finance healthcare in a global context. The emphasis will be on the application of financing and the policy challenges for population health using case-based and problem-based learning. The options for generating revenue, pooling risk, traditional and modern methods for paying healthcare providers will be introduced.

Module 4: Health and Society

This module provides you with an understanding of public health and its principles and practice. You will have the opportunity to learn about and undertake critical appraisal of research evidence and will be expected to participate fully in didactic lectures through advance preparation, as well as through team-based learning and group work.



Module 5: Innovation in Healthcare

Health policy makers are often criticised for their inability to stimulate or comprehend innovation. This module attempts to address this gap by considering the principles of innovation in healthcare, how innovation comes about, the role of different sectors and the health policy implications of future innovation.

Module 6A: Measuring and Improving Performance in Healthcare (Elective)

This module aims to introduce you to the basic concepts of measuring health system performance, the different aspects or domains of performance, and the power of comparison and international benchmarking. Finally, we introduce you to the key ways in which measurement can be deployed to improve performance.

The dissertation module (Health Policy)

Students pursuing a master's level qualification on our Health Policy programme complete an independent research project as part of their studies. Research projects can be undertaken at your place of work, under the supervision of an Imperial academic.

“Students enrolled on the full MSc programme will complete a 10,000 word dissertation in parallel with their second year modules. The dissertation and accompanying study will research, diagnose and develop recommendations for a field-based health system, health policy or patient safety case study, issue, problem or promising development. The dissertation is organisation-specific and focuses on challenges and issues that the organisation must address to move forward, improve, innovate and transform.

Module 6B: Communicating Health Policy (Elective)

The pandemic has brought to the fore the importance of effectively communicating health policy. This module focuses on helping its participants develop practical communication tools, alongside an in-depth understanding of the health communication landscape. It will consider important channels of communication such as campaigns, speeches, social media and mainstream media.

Module 7: Health Service Delivery

This module introduces you to the theoretical and practical aspects of health policy implementation. This module will give you the tools and insights required to understand and critique policy and implementation; identify the factors that help or hinder the effective development and delivery; and appreciate the complexity of translating policy to practice at global, national and local levels.

Module 8: Leadership in Healthcare

This module is designed to develop your insights into the kind of leadership required to tackle our most vexing challenges in health care. The aim of this module is to facilitate access to what is required to exercise effective leadership and to successfully deliver reforms in healthcare on an institutional, regional, national and international stage.

The dissertation module includes an introductory primer where students work on developing their dissertation topic in one-on-one advisor meetings. The Primer is designed to help students feel confident and prepared to enter the dissertation year. Another three taught tutorials guide the development of the first three chapters of the dissertation and then students move over into the self-paced half of the year, during which they collect data and write up their study findings.”

- Ruth Black,
Dissertation Module Lead



Student stories



“I really like the hybrid teaching programme that Imperial offers, where you go in for residentials twice a year to meet and interact with people, which is important. You can do the rest of the course virtually, which for me was critical because I wouldn’t have been able to do it otherwise. There was also no assumed knowledge on the course, and we could learn from each other, as we all came from different backgrounds.”

- Akshay Lakhani



“I have thoroughly enjoyed gaining critical appraisal

skills that I can apply when using published research in my policy-making, and the groupwork experience has enabled me to make connections with people I might work with in the future.”

- Silvia Davey

“Although I’ve worked in a variety of policy roles, I felt a bit stuck with limited exposure to innovative ideas or new and emerging models and concepts. So I applied for the MSc Health Policy Programme to improve my current skills, knowledge and experience and to diversify my thinking. I believe this course will help me advance my career to a senior-level policy position within the healthcare sector.”

- Mala Mistry



Meet our Programme Director, Colin Bicknell



What is most exciting about the programme?

The most exciting thing about the course is the integrated delivery combining three core

elements: theory and research, keynote examples by those who have shaped health policy, and practical authentic teaching exercises to emphasise real-world examples. Students get to learn from real experts in academia and healthcare management.

What opportunities does this programme provide to participants?

This programme equips health sector professionals with the skills to improve the quality of evidence-based health policy design and delivery for the benefit of patients and the broader population.

Who is the programme targeted at?

The MSc Health Policy programme is for a wide audience, including health and healthcare managers and policy-makers, health-related industry representatives, clinicians and allied health professionals.

What aspect of the course do you enjoy teaching the most?

The research skills development of students over the two-year part-time MSc is the most rewarding part of the teaching for me. We try and weave the research skills teaching into the modules and teach critical appraisal, research design and writing. At the end some truly impressive research theses are produced on all manner of policy aspects.

What do you hope your students will go on to achieve on completion of this course?

Simply to look at the evidence in developing policy with an open mind and a different lens to when they started.

What is your favourite part about teaching at Imperial College London?

The students!



“The MSc Health Policy programme takes fundamental, theoretical and evidence-based health policies and transitions them into plans and practices that are not only relevant nationally and internationally, but also impactful, realistic and deliverable. It’s this practical expression of knowledge and concepts that makes this course so strong.”

- Jason Lawson, Teaching Fellow



“You’ll learn with us in a variety of ways, from live group sessions, to pre-recorded lectures you can watch in your own time and thought-provoking online activities. You’ll also engage with other students in regular discussion forums, giving you the chance to exchange ideas and brainstorm with peers.”

- Lana Kovacevic, Deputy Module Lead,
Health Systems & Policy

Study qualification

We offer the following qualifications in Health Policy, which are available as a pathway that build to an MSc or as stand-alone qualifications:

- **PG Cert Health Policy (Policy Theory, Economics and Public Health Stream):** 4 core modules, 11 months
- **PG Cert Health Policy (Leading Innovation Change Stream):** 10 months
- **PG Dip Health Policy:** 8 core modules, 21 months
- **MSc Health Policy:** 8 core modules, a research project, 23 months

Future opportunities

Our MSc in Health Policy is designed for those working in the field to gain skills in critical analysis of studies, research design and practical application of evidence.

Graduates are equipped to advance their managerial career in the NHS, industry and private sector in the UK and the rest of the world.

MSc Patient Safety: Course overview

The MSc Patient Safety is designed to provide you with the skills to improve the safety and quality of care. With evolving complexity in healthcare, patient safety is fundamental to delivering health services. This programme aspires to develop global leaders and change-makers in patient safety.

Through this programme you will gain insights into the global context of healthcare, drawing upon a broad range of expert perspectives from academia, healthcare and industry. You will explore themes including safety and sustainability, global health innovation, interprofessional practice, equality and diversity, and

societal impact. You will also learn about the interconnections between health systems, policy, innovation and leadership, exploring how this knowledge can be translated and applied through a research study you'll complete to address a patient safety challenge.

Throughout the programme, you will be encouraged to consider your own practice, recognising that even in well-developed health systems, affecting change is demanding. We welcome UK and international health professionals to join us, and as the MSc is delivered fully online, it is easily accessible to students globally.

Module description

Module 1: Health Systems and Policy

This module helps you understand the building blocks of the health system, such as financing systems, human resources, information policy, service delivery, and leadership and governance. It shows how an understanding of these domains, and their interrelatedness, should inform the design of effective policies, and ensure that resources are used wisely.

Module 2: Improvement in Practice

This module provides you with a deep understanding of rigorous scientific but practical patient safety and quality improvement principles and methods. You will apply these concepts to real-world safety and quality problems through case studies, simulation, and virtual workshops, as well as to challenges faced by yourself or your own organisation. It also serves as an introductory module for the whole programme.

Module 3: Social Impact and Patient Safety

This module helps you develop a detailed understanding of the social impact of patient safety and related academic theories, including an understanding of the attitudes towards and models of patient involvement.

Module 4: Safer Systems

This module takes a holistic, systems approach to patient safety and quality improvement. Through a range of exercises, case studies and learning activities, you will develop your understanding of how systemic and organisational approaches to quality and safety, including contextual factors, such as organisational processes and culture, can influence outcomes. Theories for the analysis, simulation and evaluation of systems are linked to real-world healthcare examples.



Module 5: Innovation in Healthcare

Health policy makers are often criticised for their inability to stimulate or comprehend innovation. This module attempts to address this gap by considering the principles of innovation in healthcare, how innovation comes about, the role of different sectors and the health policy implications of future innovation.

Module 6: Decision Making

This module equips you with an understanding of medical decision making. You will be familiarised with medical decision making as a quantitative field of study, as well as a study of the psychological processes underlying judgement and decision making.

Module 7: Human Factors in Organisations

This module introduces you to human factors within healthcare and across other industries. In addition to gaining an understanding of the context, background and historical perspective of the field, you will also gain practical tools and methods that have been applied in human factors.

Module 8: Leadership in Healthcare

Through this module you will develop your insights into the kind of leadership required to tackle our most vexing challenges in health care. You will build knowledge of what is required to exercise effective leadership and to successfully deliver reforms in healthcare on an institutional, regional, national and international stage.

The dissertation module (Patient Safety)

Students pursuing a master's level qualification on our Patient Safety programme complete an independent research project as part of their studies. Research projects can be undertaken at your place of work, under the supervision of an Imperial academic.

“Students enrolled on the full MSc programme will complete a 10,000 word dissertation in parallel with their second year modules. The dissertation and accompanying study will research, diagnose and develop recommendations for a field-based health system, health policy or patient safety case study, issue, problem or promising development. The dissertation is organisation-specific and focuses on challenges and issues that the organisation must address to move forward, improve, innovate and transform.

The dissertation module includes an introductory primer where students work on developing their dissertation topic in one-on-one advisor meetings. The Primer is designed to help students feel confident and prepared to enter the dissertation year. Another three taught tutorials guide the development of the first three chapters of the dissertation and then students move over into the self-paced half of the year, during which they collect data and write up their study findings.”

- Ruth Black,
Dissertation Module Lead

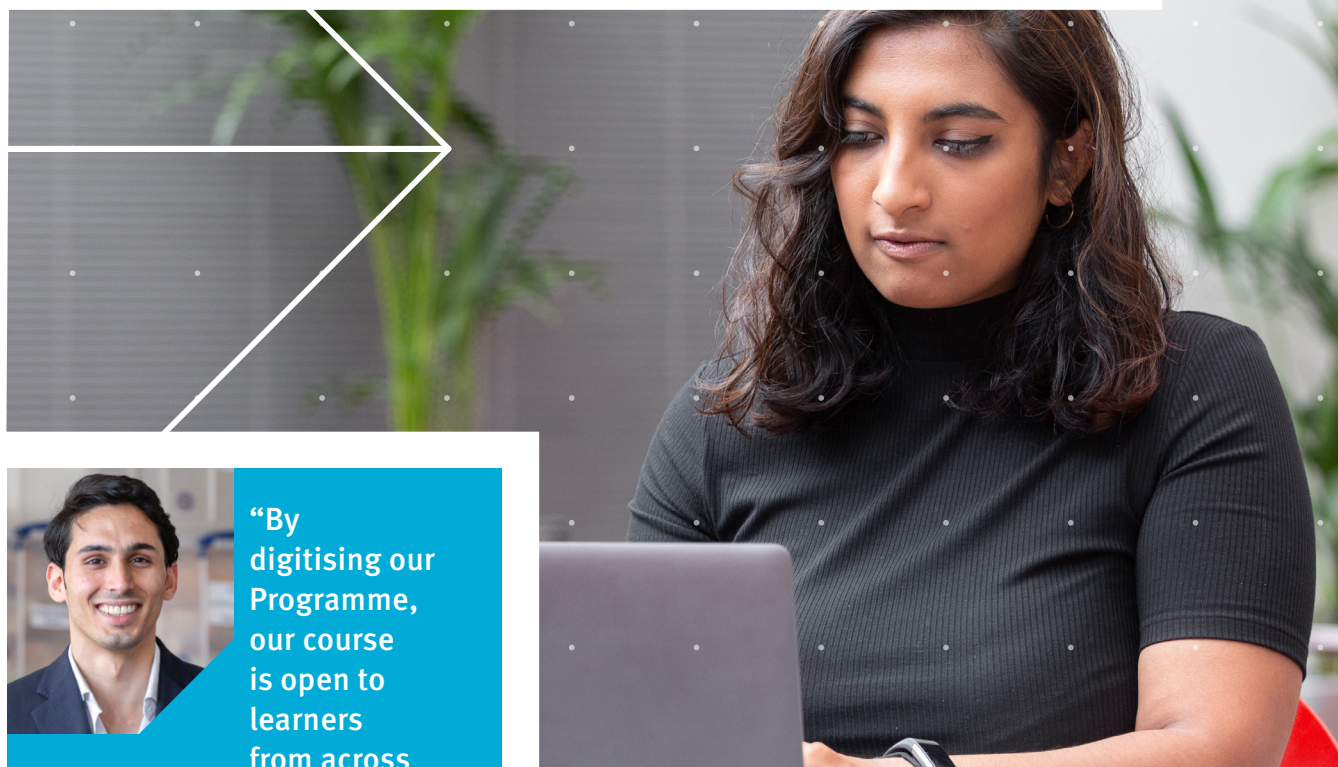


Student and staff stories



“There are different opportunities for you to engage with the course. For example, we have a Q&A session with a panel of experts in patient safety who share their insights on large-scale medical failures. You cannot miss this wonderful experience!”

- Charlotte Parsley, MSc student



“By digitising our Programme, our course is open to learners from across

the world, bringing in a diversity of experiences and knowledge while capturing global patient safety perspectives. Our collaborative approach to learning with a wide range of relevant stakeholders and industry enables students to learn from real-life examples and gain valuable insights into the dynamic challenges facing healthcare systems.”

- Hadi Alagha, Teaching Fellow in Patient Safety

“Safe care will be essential for achieving universal health coverage. There are challenges, and we understand those. That’s why at the Institute of Global Health Innovation, we are seeking to help shape global health policy in relation to patient safety. We’re passionate about using our expertise to enable global leaders to become change markers in patient safety and that’s why we established the Masters in Patient Safety.”

- Professor David Nabarro, Co-Director of the Institute of Global Health Innovation



Study qualification

We offer the following qualifications in Patient Safety, which are available as a pathway that build to an MSc or as stand-alone qualifications:

- **PG Cert Patient Safety:** 4 core modules
- **PG Dip Patient Safety:** 8 core modules
- **MSc Patient Safety:** 8 core modules, a research project, 2 years



Health Innovation



Future opportunities

Our graduates will be well-placed to advance in a range of directions.

Safety and quality are increasingly important topics in the national dialogue of health systems, including the NHS. This is compounded by tightening national budgets. Individuals who demonstrate an understanding of patient safety lapses and how to address them are increasingly valued by employers.

Given the portfolio of high-calibre teaching staff, you can gain exposure to leaders in industry, academia and policy.

You will graduate with advanced research skills in healthcare design. This includes critical design thinking, entrepreneurship and leadership. Many graduates pursue further advanced study at PhD level in healthcare-related design and innovation areas.

You'll gain the knowledge and skills to:

- **create and lead design innovations across a diverse range of healthcare contexts**
- **consult in design-led innovations for healthcare**

MSc Healthcare and Design:

Course overview

The MSc Healthcare and Design programme aims to equip you with the skills to become pioneering innovators in design for healthcare. This programme specialises healthcare professionals and people from non-medical backgrounds to understand the challenges in healthcare systems and find tangible solutions to solve design problems.

Through this programme, you will build an awareness of the challenges that a modern healthcare system experiences, foster collaboration between specialisms, help develop business and innovation models and gain the skills to transform healthcare through design. The course is co-taught with the Royal College

of Art, which has a very long design history in the healthcare space. Some modules are delivered in collaboration with IGHI's Helix Centre, which is a laboratory for designers, patients and healthcare workers to brainstorm ideas for healthcare challenges. The MSc programme is delivered through a blend of face-to-face and online teaching.

Throughout the programme, you will develop expertise in human-centred design to deeply understand the health and care issues people face, positively influence people's behaviours and optimise healthcare interventions to benefit patients and professionals alike.

Module description

Module 1: Design Led Innovation in Healthcare

On this module you will develop a detailed understanding of the healthcare system in the UK, as well as an introduction to other global systems. You will learn about the systemic challenges to the health system including demography, the rise of chronic conditions and new technology. Understanding and being able to apply design theory in solving these problems will be central to the module.

Module 2: Principles of Design Led Innovation

This module provides you with a detailed introduction to all aspects of design. It highlights how a design led approach to problem solving can provide novel solutions and different ways of approaching healthcare challenges. It covers topics such as: creative and design thinking, communication design, service design and an introduction to product design.

Module 3: Health Research Toolkit

Through this module you will develop a detailed understanding of both academic and design research methodologies with the aim of creating of understanding of when to use each. It covers topics such as ethnography and user research, as well as other qualitative methodologies and the role of trials and understanding/demonstrating clinical impact.

Module 4: Design Dash

In this module you will have the opportunity to be embedded within the Helix team for a week; working live on a rapid design project to prototype a solution to an identified challenge. You will frame and dissect the problem using user research and site visits; craft a solution and develop a business case to support it. You will then be expected to present your prototype solution to a panel of judges for feedback.



Module 5: Innovation in Healthcare

Health policy makers are often criticised for their inability to stimulate or comprehend innovation. This module attempts to address this gap by considering the principles of innovation in healthcare, how innovation comes about, the role of different sectors and the health policy implications of future innovation.

Module 6: Design for Behaviour Change

This module provides you with a detailed understanding of behaviour change and how design can be used to deliver that. In addition to learning about relevant aspects of behavioural economics, you will also spend time understanding the impact of the environment on behaviours and how this can be used both in healthcare and the commercial world.

Module 7: A Health Business Toolkit

This module provides you with a detailed understanding of the innovations and entrepreneurial landscape that exists in healthcare. You will learn how to develop compelling business cases and hear from successful innovators. It covers topics such as: entrepreneurialism, developing business cases, IP and regulation in a healthcare context.

Module 8: Leadership in Healthcare

Through this module you will develop an understanding of the kind of leadership required to tackle our most vexing challenges in health care. You will build knowledge of what is required to exercise effective leadership and to successfully deliver reforms in healthcare on an institutional, regional, national and international stage.



Future opportunities

The Healthcare and Design Masters runs jointly with the Royal College of Art, positioning students at the forefront of design innovation for healthcare. Following the course, alumni are equipped with skills in critical design thinking, co-design with users and design for behaviour change. Career opportunities include progression to senior leadership positions in healthcare, leading on quality improvement projects that incorporate design innovation.

Students have progressed to be appointed by design studios such as IGHI's Helix Centre, a design innovation lab working at the heart of healthcare. The course provides students with skills in business and entrepreneurship, including crafting a business case and managing IP, enabling graduates to take novel ideas from the course, develop and mature them beyond graduation towards a spin-out to work in industry.

The diverse range of career opportunities match the broad range of backgrounds and disciplines on the course, spanning opportunities in service and product design; redesign of healthcare architecture; fashion design for healthcare through to infection control; NHS trials; and allied healthcare roles including physiotherapy and occupational health.

Student stories



“The programme broadened my perspective on what design and research can achieve if you bring them together. What I have learned and applied from the programme has helped me land a new role: User Researcher at the National Institute of Health and Care Excellence (NICE).”

- Clarissa Gardner, MSc graduate



“The thing I enjoyed the most about this programme

is that we had a mixed cohort of healthcare workers and designers. It made me see things from a different perspective and approach things differently.”

- Annie McKirdy, Teaching Fellow and MSc graduate

“I graduated with a distinction level MSc in Healthcare & Design. Although I have a medical background, I also worked as a front-end engineer and user experience designer within startups before joining the MSc course. This programme provided an excellent opportunity for me to learn from talented individuals from multi-disciplinary backgrounds and combine my interests in medicine and design.”

- Jeremy Chui, MSc graduate





Accelerating your career

Undertaking a postgraduate programme at one of the world's leading universities will prepare you to work in senior role, with the potential to apply your skills and knowledge to lead transformative strategic initiatives and achieve significant impact.

By completing one of our Institute of Global Health Innovation programmes, you will join our growing community of alumni, driving forward the improvement of health and social care at scale and improving patient outcomes around the globe. An MSc equips you with the critical thinking, ideas and network to become a leading change-maker. Career opportunities include policymaking and leadership positions in governments and national bodies, along with further opportunities to study at postgraduate level, preparing you to take forwards a research or quality improvement idea at PhD level, should you choose.

FAQs

1. What if I don't meet the academic requirements for the course?

Applicants who do not meet the academic requirements but have substantial relevant industry experience may be admitted following completion of a 'Special Qualifying Exam' (SQE).

2. What kinds of learning activities will the course involve?

Our programmes include a range of learning activities, such as pre-recorded lectures, asynchronous discussions, podcasts, and webinars.

3. What kind of support will I get?

We work hard to ensure that you are fully supported through the programme. We have an online resources area (the Hub) where you can access all the materials needed for your study. Our programme leads, and teaching fellows are always here to support you in your academic practice. We also put you into peer support groups, enabling you to capitalise on the skills and expertise of different disciplines of your peers.

Imperial also provides tailored learning support, pastoral support with an assigned personal tutor and short study skills courses for our students.

4. Can I pay in instalments?

You can either choose to pay in one go or in instalments. If you wish to pay in instalments, contact the Student Lending team before starting your study. More information can be found here: <https://www.imperial.ac.uk/students/fees-and-funding/tuition-fees/payment-terms/postgraduates/>

5. How will I interact with my peers?

You will work with your peers on different group projects and learn from their previous experience and skills. We bring together participants from a diverse range of roles and backgrounds so that you have the opportunity to network with people through the study journey.

6. What's the workload like?

If you undertake the master's level course, you are expected to make the time commitment required to finish your study. You may need to plan your time to ensure the balance between your work and study.

At Imperial, each ECTS credit taken equates to an expected total study time of 25 hours. The expected total study time for the MSc is calculated based on 24 months, 90ECTS.

We expect you to spend 20% to 25% of the time engaging with online content, working with your peers and small group learning activities, and attending online tutorials and webinars.

The rest of the hours will be made up with independent study and the completion of assignments.

7. Will I get access to Imperial's facilities and student benefits?

Yes, once you're registered with Imperial, you will have a student card, which allows you to use the library to get all the student discounts, student bus pass, and other student benefits.

**Imperial College
London**

**INSTITUTE OF
GLOBAL HEALTH
INNOVATION**